

Gateway Interactive Map User guide

TRAFFIC VOLUME DATA

Starting on 2021 the Vehicle Volume Summary or Traffic Counts will no longer be available in a book format. The annual results will be available through an interactive map created by DelDot called **Gateway**. Each segment will include 10 years of historical data, inventory road numbers, mile points and road names among other information concerning each specific segment of road.

User information:

Gateway online link :

<https://deldot.maps.arcgis.com/apps/webappviewer/index.html?id=4f76a1fa5b5c493cb3e1fad44a50dad1>

Important and useful features:

A: Search bar

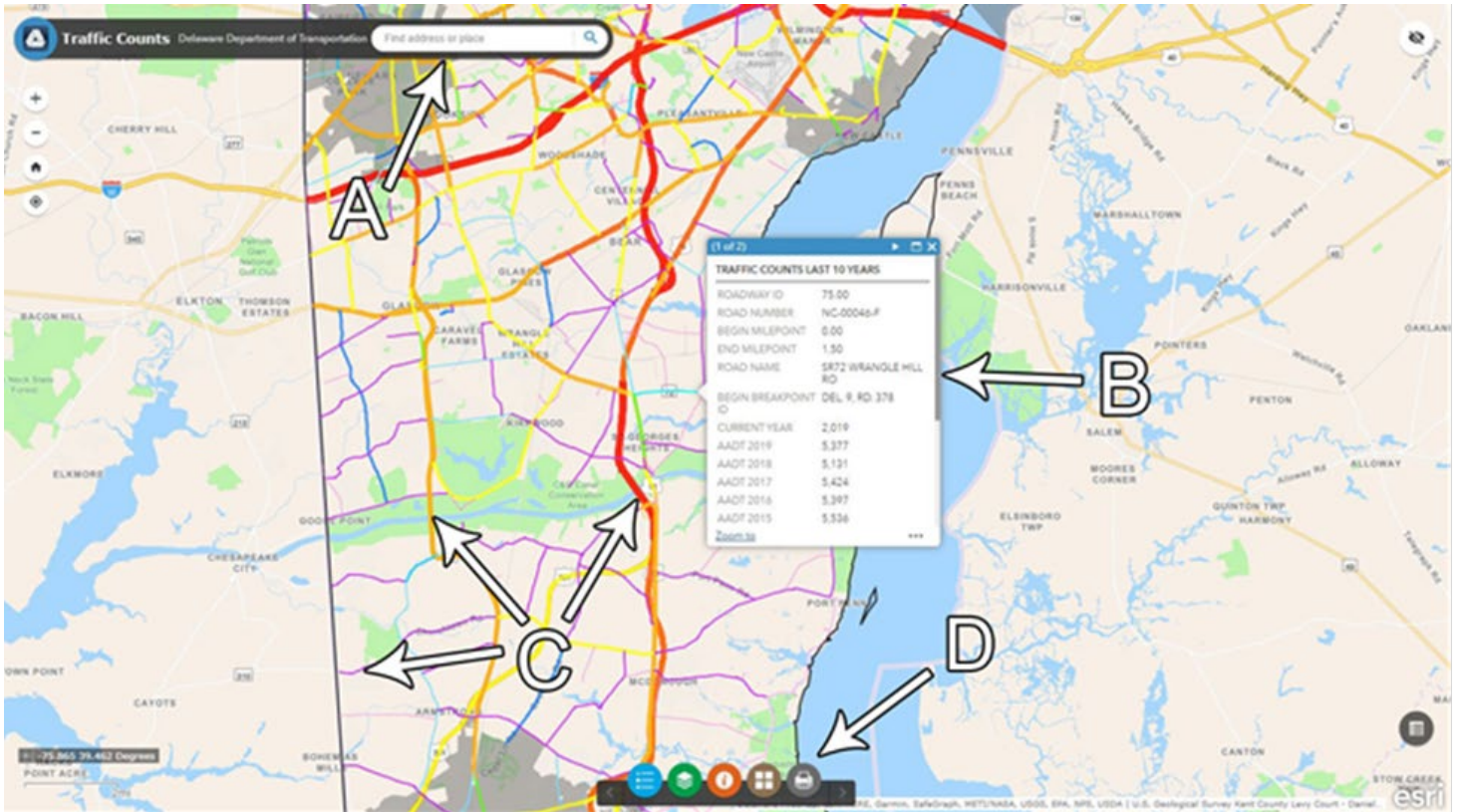
A search bar has been provided to make it easy and simple to find any road. Type in any road in Delaware and the map will automatically navigate to the road being searched.

B: Traffic data and road information block

By clicking on a road segment, an information block will appear which contains traffic counts data related to that specific segment. Some roads consist of multiple segments and the traffic data will vary from segment to segment. It's very important to note that only roads that fall under Del Dot's state maintenance responsibilities will have traffic data available. Any roads maintained by municipalities or suburban developments will not have any traffic data available.

C: State maintained roads will be distinguished by bright colors which also represent the amount of traffic traveling through each segment.

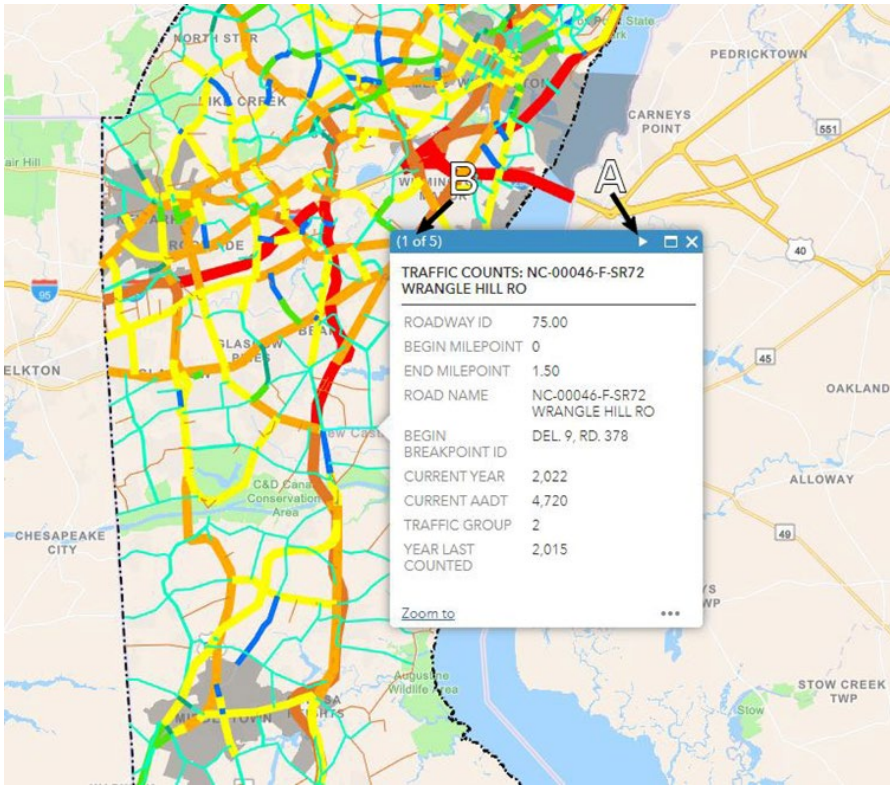
D: Each widget contains different options such as legend, layers, basemap gallery and printing options.



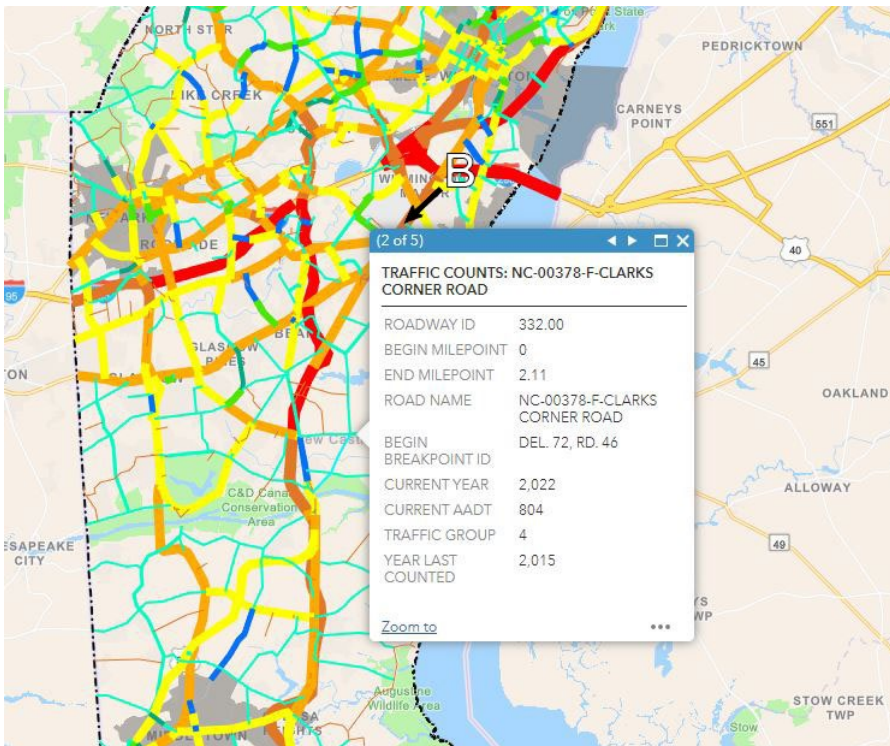
How to find additional information and historical data:

Additional information for each road segment such as segment length, state and county boundaries, historical data and traffic pattern group are available by following the instructions below.

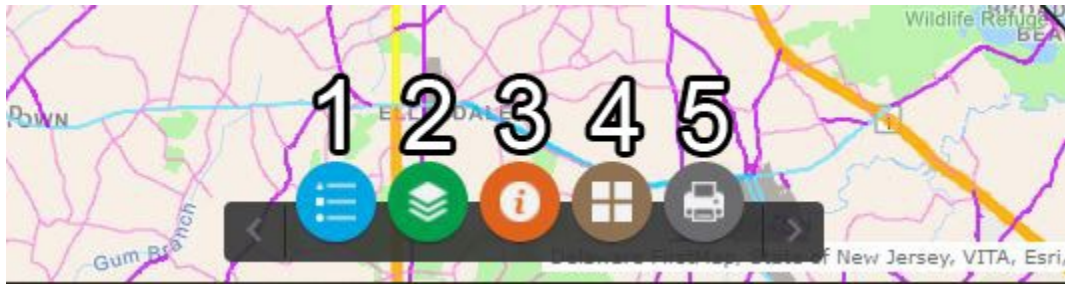
A: This arrow allows the user to scroll through the pages (B) containing other data associated with the segment.



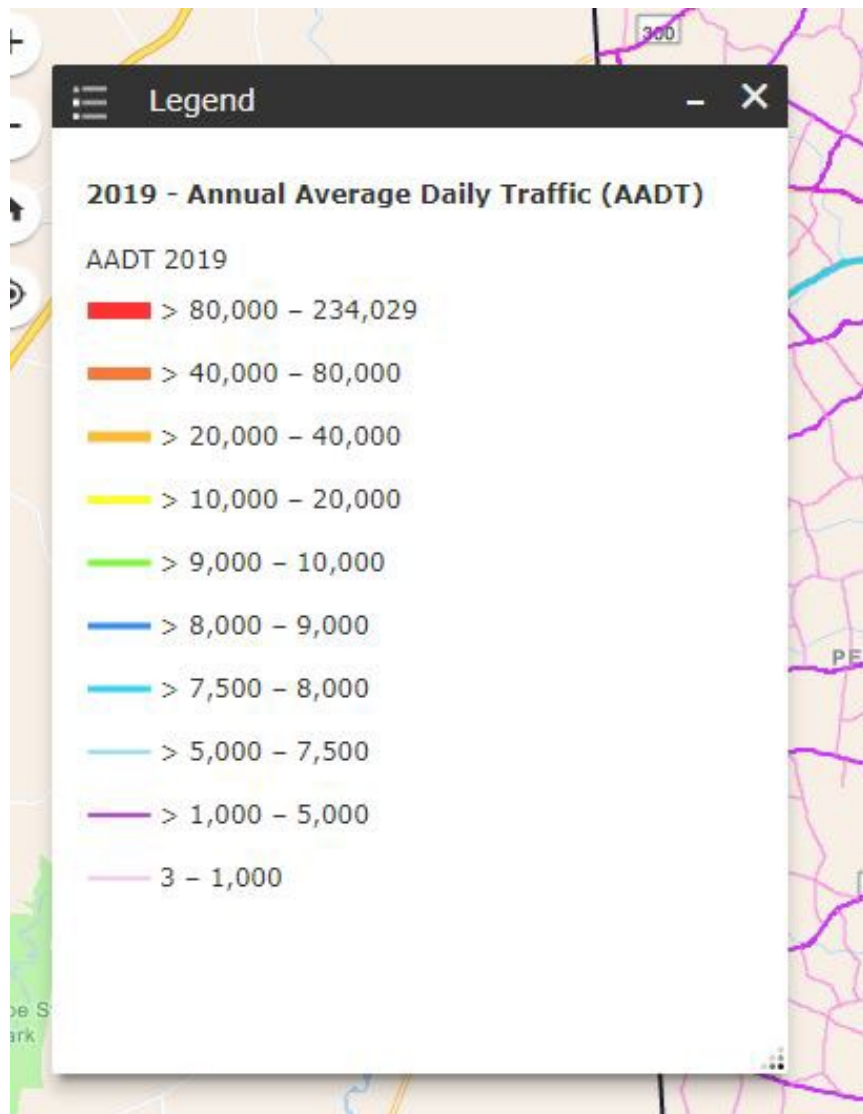
B: Shows the page number



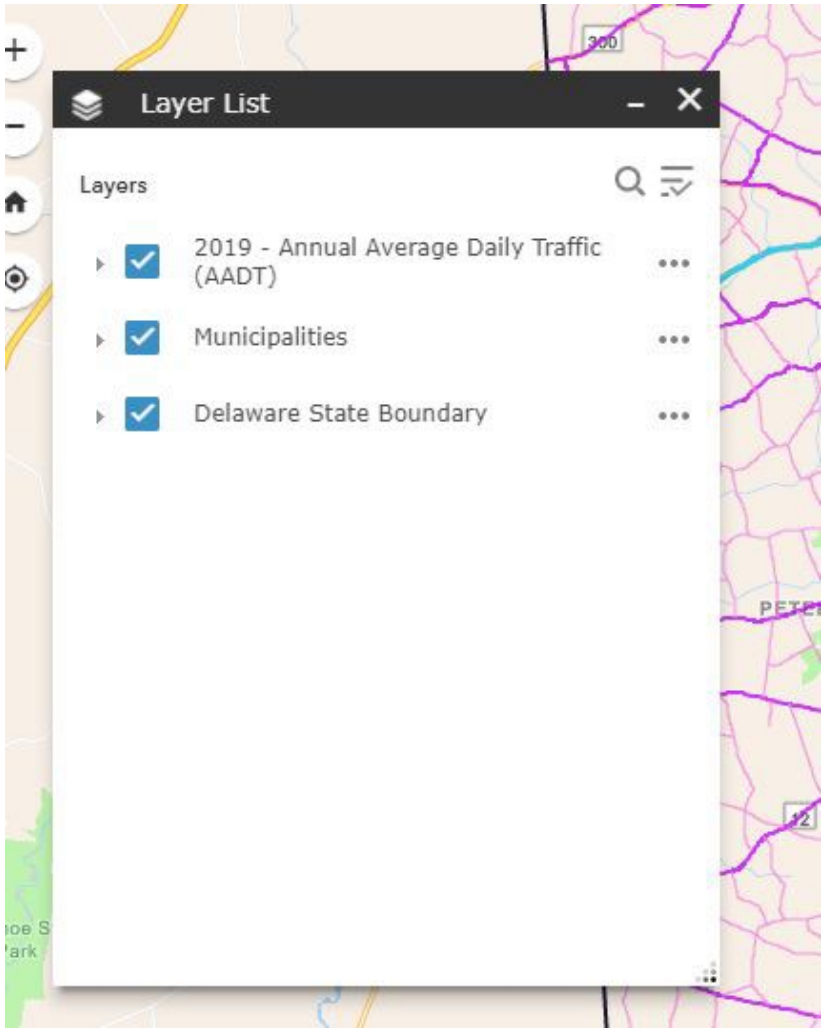
Layer options:



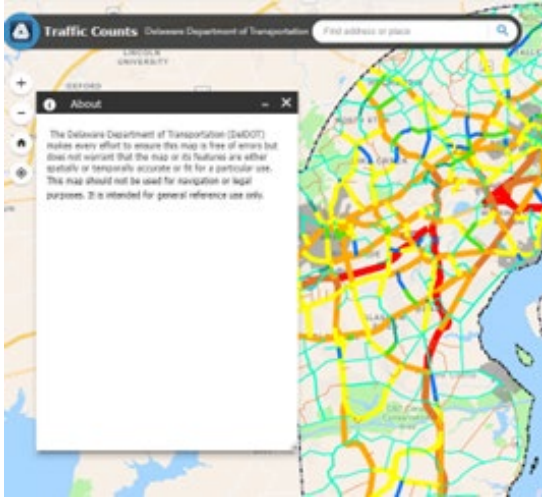
1: Legend depicting traffic volumes by color



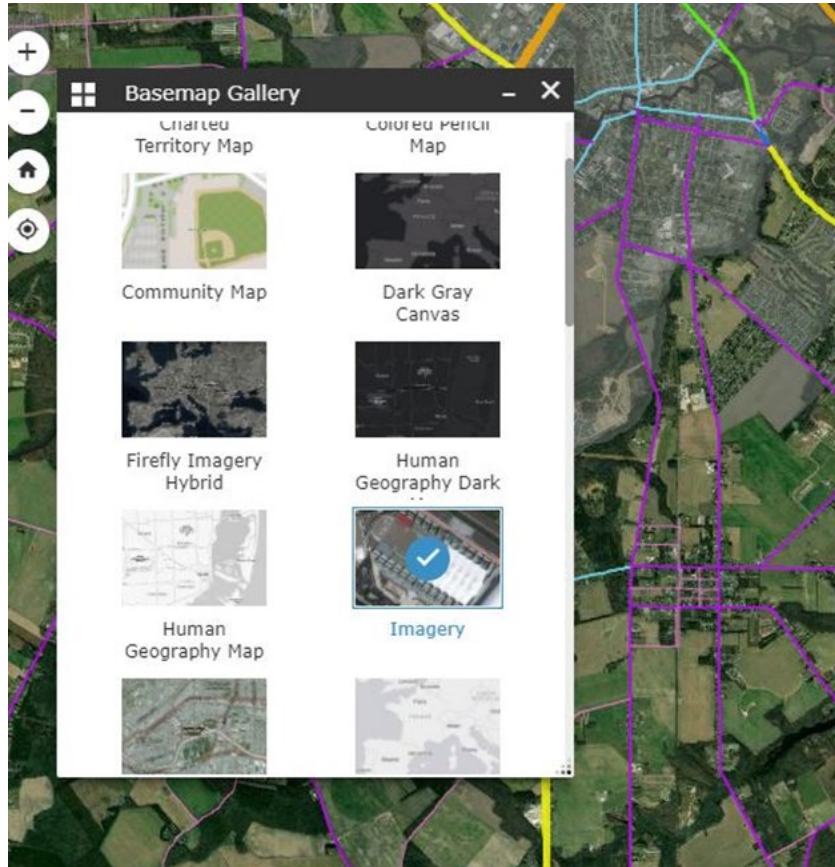
2: Layers list.



3: Information about Gateway



4: Basemap gallery options. Most popular layers are Imagery and Streets



5: Printing options

